

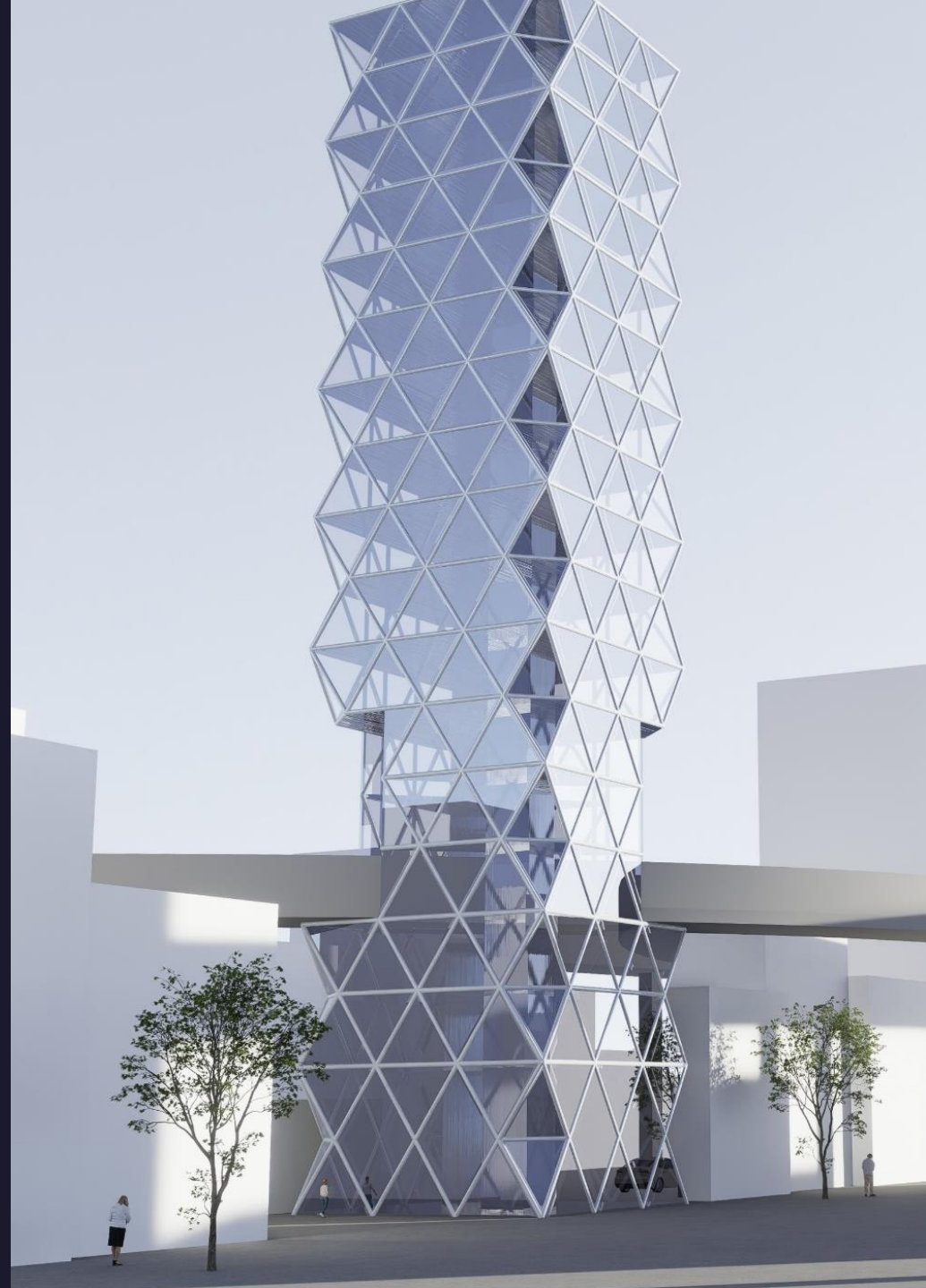
McGill Seismic Design Team | EERI Student Chapter

Sponsorship Package 2026

McGill University

Email: seismicdesign@mcgilleus.ca

LinkedIn: [McGill Seismic Design Team](#)

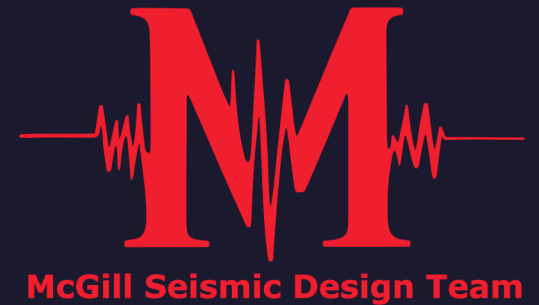


Who are we?

We are McGill's Seismic Design Team — an undergraduate group passionate about architecture, structural, and earthquake engineering. Our goal is to promote earthquake engineering within the McGill community by competing annually in the Seismic Design Competition (SDC) hosted by the Earthquake Engineering Research Institute (EERI).

Our team

Our team brings together undergraduate students from **civil, mechanical, architecture, and finance**. Our diversity of disciplines and academic levels strengthens our creativity and problem-solving approach.





Earthquake Engineering
Research Institute

What is EERI?

EERI is the leading professional association advancing earthquake risk reduction through research, practice, and education.

Each year, EERI hosts the **Seismic Design Competition** ([SDC](#)), where over **50 international university teams** design and build high-rise scale models that are tested on a shake table simulating a **magnitude 9.0 earthquake**. Teams are judged on **structural performance, presentation quality, and efficient use of floor space**.

[See more about EERI](#)

Our SDC 2025 Experience

Over 50 teams from around the world came together to design and test high-rise models on shake tables simulating magnitude 9.0 earthquakes.

View the [livestream](#) of our first performance at Seismic Design Competition at 2:13:10.



What We Do

❖ Architectural Sub-Team

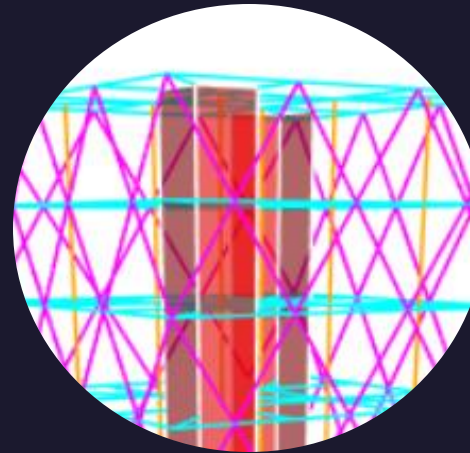
- Design an architectural model that seamlessly integrates into the skyline of a city selected by the SDC.
- Create renderings and floor plans, showcased on team poster, by using AutoCAD, Revit, Lumion 3D.

❖ Structural Sub-Team

- Design a structural model that complies with competition rules and requirements.
- Select Ground Motions and perform tests using structural analysis software (ETABS) to ensure Earthquake Resistance.

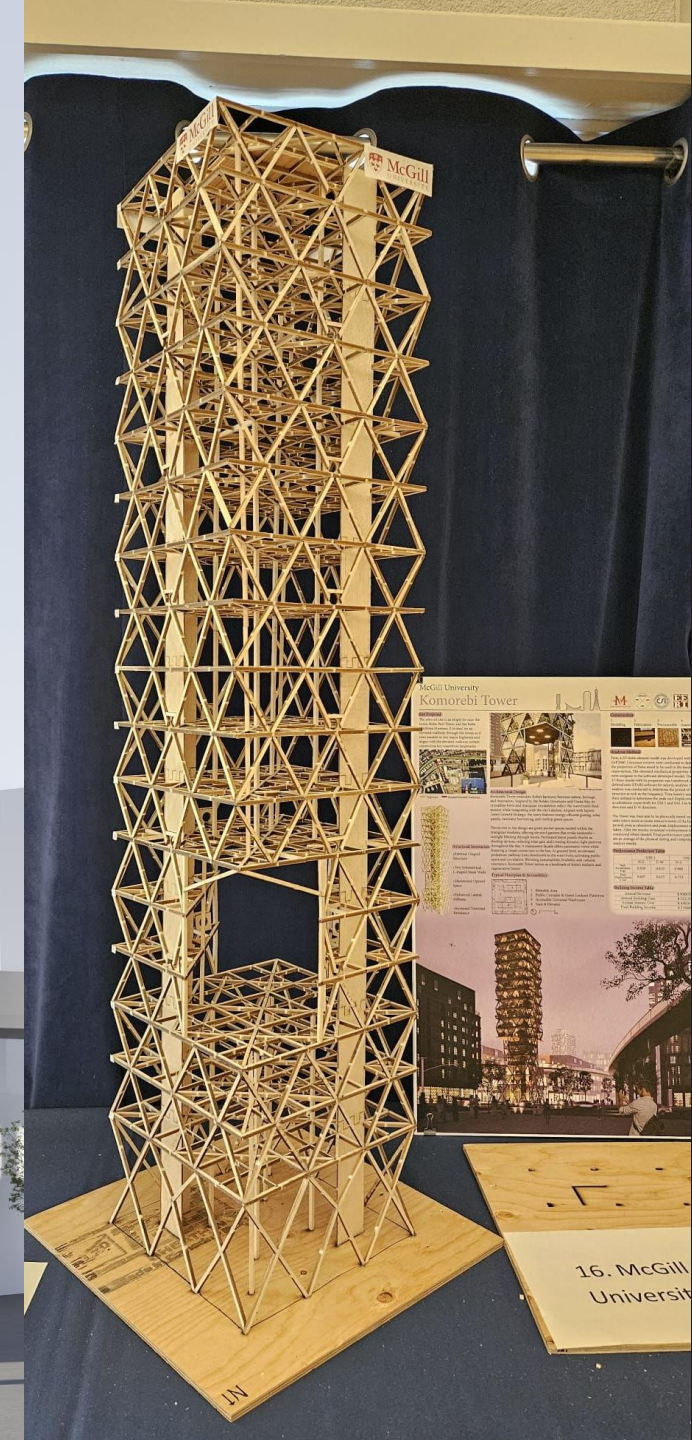
❖ Construction Sub-Team

- Test material properties of Balsa Wood to calibrate the model.
- Prepare construction drawings and build the tower using laser-cut members.



Our 2025 Design

- ❖ Challenge: Integrate an **elevated diagonal pedestrian pathway** in a 15 to 19 tower building by maximizing floor area and integrating the architecture into Kobe's skyline.
- ❖ Key structural choices: Reinforced lateral rigidity and torsional resistance: diagrid external structure, L shaped symmetric shear walls, minimal interior columns, open layout to maximizes space.
- ❖ Key architectural choices: The tower integrates Kobe's history with a vision for sustainability and innovation. Inspired by Osaka Bay, its crystalline façade reflects light, while the triangular exoskeleton mirrors the waterfront's wavy motion.



A Bigger Stage, A Louder Voice: 13NCEE 2026

In July 2026, the **Seismic Design Competition (SDC)** will be held alongside the **13th U.S. National Conference on Earthquake Engineering (13NCEE)** in Portland, Oregon. This combined event will gather thousands of scholars, practicing engineers, and students from across disciplines to exchange ideas and push the boundaries of earthquake engineering.

2026 SDC and 13NCEE together represent one of the **largest earthquake engineering gatherings worldwide.**



13th National Conference on
EARTHQUAKE ENGINEERING
PORTLAND, OREGON | JULY 13-17, 2026

Resilience Through **Community Engagement** and **Technology**



Why Sponsor Us?

- ❖ **Empower Future Engineers:** Help us educate the next generation of engineers in hands-on seismic design.
- ❖ **Global Representation:** Support us as we proudly represent McGill University and your company on the international stage at the 2026 Seismic Design Competition in Portland, Oregon.
- ❖ **Brand Visibility:** Your logo will be prominently displayed on our team uniforms, poster and social media. Gaining exposure among industry leaders, academics, and peers.
- ❖ **Networking Opportunities:** Establish close relations with professionals in the seismic engineering sector and with passionate McGill University students.
- ❖ **Impactful Contribution:** Your sponsorship will directly contribute to our ability to compete, innovate and inspire future engineers.



Sponsor Package Benefits

Sponsor Benefits	Bronze until 2000\$	Silver \$2000+	Gold \$3000+	Platinum (Contact us)
Company Logo on Team T-shirts	Small logo on sleeve	Medium logo	Large logo	Prominent placement of logo
Company Logo on Competition Poster	Small logo at the bottom	Medium logo the bottom of poster	Large logo on the bottom of poster	Featured at most visible section
Website Promotion	Company name and logo listed	Logo with clickable link to your website	Dedicated sponsor highlight section	Featured placement with a spotlight article
Unique Social Media Appreciation Post	Group appreciation post	Individual mention with a logo	Dedicated post with a brief company highlight	Featured post, reel and company highlight
Networking Event			Invitation to various presentations and networking opportunities	Invitation at Friedman Family Visiting Professionals Program talk and networking at McGill

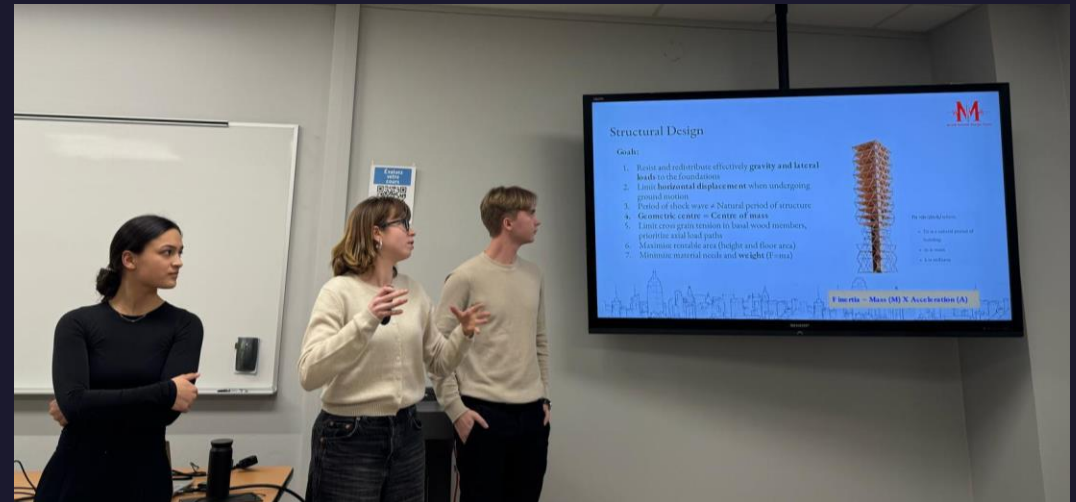
Networking Opportunities

EERI Friedman Family Visiting Program

- ❖ Invitations: companies, McGill, Concordia, and Polytechnique students
- ❖ [More on the Friedman Family Visiting Professionals Program](#)

Invitation to various presentations

- ❖ Last year, presenting our design at **Polytechnique Montreal** to Mr. Rafael Sabelli, director of Seismic Design at Walter P Moore, and many others.



Montreal set to host the 19th World Conference on Earthquake Engineering 2028

[19WCEE2028_MontrealBid.pdf](#)

Supporting the McGill University Seismic Design Team represents a unique sponsorship opportunity with the upcoming 19th WCEE in 2028. As the only design team from Montreal—and indeed all of Quebec—sponsoring us to compete at the Seismic Design Competition and the 13th NCEE in 2026, allows you to align early with this approaching event in Montreal. Your support will not only empower our design team and its next generations but also showcase your commitment to innovation in the seismic domain.

Montréal 2028

→
19th World Conference on Earthquake Engineering
– WCEE 2028

October 1 to 6, 2028
Montréal, Canada



Supporters and Potential Sponsors

To date, Montréal's proposal to host 19WCEE has generated a lot of interest and received the endorsement of many important Canadian-based stakeholders. A successful bid will allow us to reach out to more partners, both locally and globally.

+15
Governmental
Public Institutions



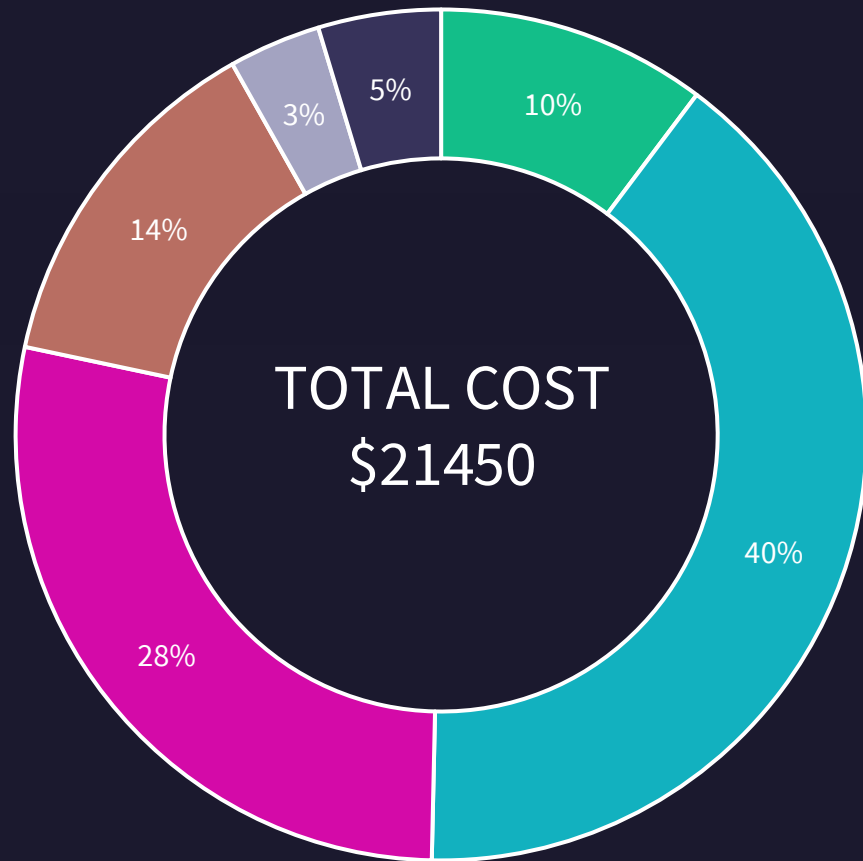
+20
Universities
Academic
Associations



+30
Industry Partners



How we allocated funds in our Budget



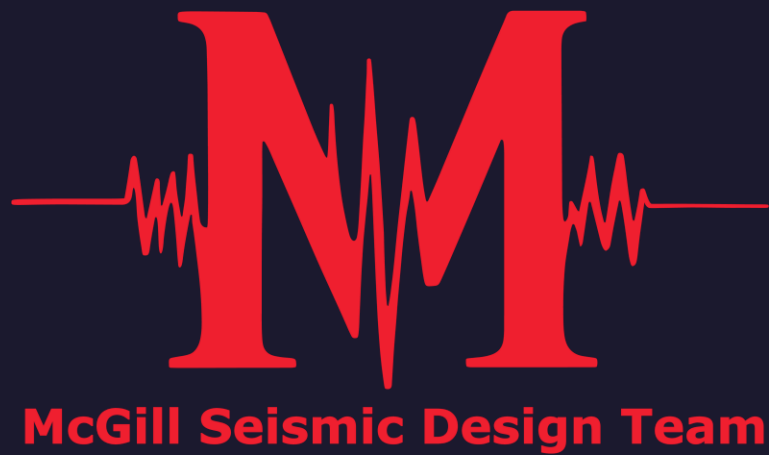
- Material Expenses, Construction, Testing - \$2200
- Travel to Competition - \$8600
- Accommodation - \$6000
- Competition Fees - \$2900
- Building Shipment - \$750
- Campus Events - \$1000

Thank You

The **McGill Seismic Design Team** sincerely appreciates your time in reviewing this sponsorship package. We are excited about the opportunity to represent **McGill and your company** at the **2026 Seismic Design Competition**.

Join us in shaping the future of seismic design. Contact us today to discuss sponsorship opportunities!

Krista Guenov a Théophile Masurel
Team Captains, McGill Seismic Design Team
Email: seismicdesign@mcgilleus.ca
Tel: (514) 928-0624



LinkedIn [McGill Seismic Design Team](#)

Email seismicdesign@mcgilleus.ca

Link Tree [McGill Seismic Design Linktree](#)